



# **EXCALIBUR**

## **TRUCK ACCESSORIES**

**GMC/CHEV GAS/DIESEL**

**2007-2018 1500**

**2007-2019 2500/3500**

### **RUNNING BOARD INSTALLATION GUIDE**

**EXCALIBUR RESEARCH DEVELOPMENT AND  
MANUFACTURING**

**TECH SUPPORT  
TEXT OR CALL 1 512 870 7828**

**EXCALIBURRDM@GMAIL.COM**

**IF YOU HAVE ANY  
QUESTIONS PLEASE GIVE US A CALL.**

**EXCALIBURTRUCKUSA.COM**



## TOOLS REQUIRED

10mm Socket or Combination Wrench

13mm Socket  
13mm Combination Wrench

9mm Drill bit

Permanent Marker

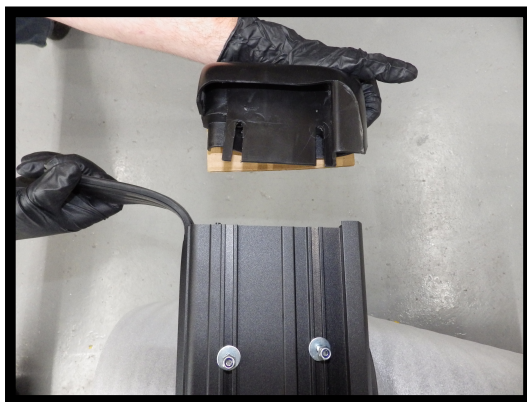
Box Cutter or Sharp Knife

**OPTIONAL:** Wax based under coating to cover brackets and hardware at the end of the install.

NOTE : A POWER DRILL OR POWER DRIVE WILL SPEED UP THE INSTALLATION. **PLEASE NOTE: IF POWER TOOLS ARE USED, TAKE CARE TO ENSURE NOT TO STRIP OR OVER TIGHTEN THE HARDWARE.**

## PARTS LIST

QTY	DESCRIPTION
2	Running Boards
2	Mud guards
1	Cab Bracket Kit
1	Rear Bracket Kit
1	DPF Tank Bracket Kit (if applicable)
1	Light Kit (if applicable)



### 1. ASSEMBLE THE RUNNING BOARDS.

Install the mud guards on the running boards prior to installation.

Locate and identify the left and right mud guard.



### 2. PUSH THE MUD GUARDS ON TO THE RUNNING BOARDS

Push the mud guards on to the running boards until they bottom out and secure using the hardware located at the rear of the running board.



### 3. SECURE RUBBER FILLER STRIP TO THE MUD GUARDS.

Using the pre installed SS self tapper secure the rubber filler strip to the mud guards.

Once completed, trim the rubber flush to the rear of the mud guard using a box cutter or a sharp knife.

**NOTE: DUALY BOARDS DO NOT REQUIRE THE SELF TAPPING SCREW IN THE REAR MUD GAURD.**

The rubber has been crimped into the aluminum extrusion at the rear.



### 4. SACRIFICIAL CARDBOARD

We have installed a sacrificial piece of cardboard on the mud guards. The intention is to prevent scratches during install.

Leave this in place until the installation is complete and you are ready to secure the mud guards.



**FOR VEHICLES EQUIPPED WITH  
FACTORY REAR DIFFUSERS.  
PLEASE FOLLOW THE  
FOLLOWING STEPS FOR  
REMOVAL.**

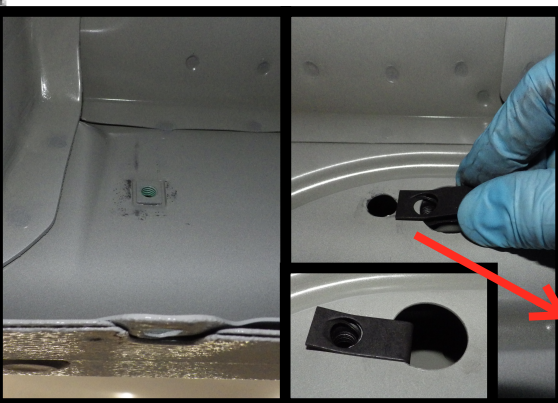
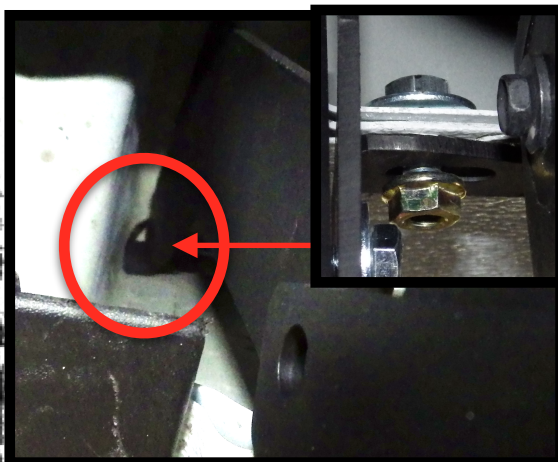
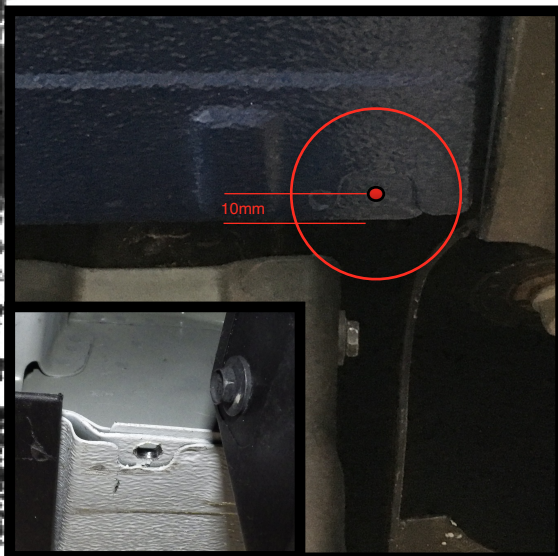


## **DIFFUSER REMOVAL**

Using a T15 torques bit remove the 4 screws holding the diffuser to the fender.

The diffuser can be removed by firmly pushing it towards the inside of the vehicle.

With the diffuser removed reinstall the hardware holding the wheel well liner in place.



### **1. DRILL A 9MM HOLE (DPF TANK ONLY)**

#### **\*PASSENGER SIDE\***

On the passenger side behind the front wheel you will notice a U shaped indent in the sill. Drill a 9mm hole in the center of the U shaped indent.

For vehicles without a tank, the first bracket will be mounted in the forward most factory mounting location.

**IF YOUR VEHICLE DOES NOT  
HAVE A DPF TANK DO NOT  
DRILL THIS HOLE.**

### **2. PASSENGER SIDE FRONT UREA BRACKET**

The hook on the top section of the bracket is designed to fit in the opening located at the top of the body reinforcement. As seen on the left.

Insert the supplied M8X20mm bolt and washer from the top down, fasten the bolt using a M8 flange nut. DO NOT TIGHTEN AT THIS TIME.

### **3. SECOND UREA BRACKET**

The second bracket is mounted on the factory mounting location located to the rear of the second body mount (behind the urea tank)

Mount the bracket using the supplied M8X20 bolt and flat washer. Thread a bolt into the factory threaded mounts using a flat washer.

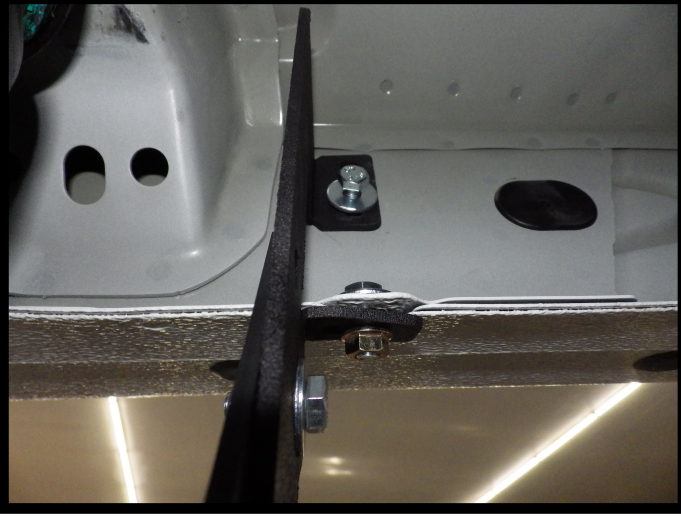
**ON TRUCKS WITHOUT A DPF  
TANK THIS BRACKET WOULD  
BE LOCATED IN FRONT OF  
THE SECOND BODY MOUNT.**

### **4. FACTORY MOUNTING POINTS**

Located on the sill of the truck there are two types of mounting locations. One will require the installation of a threaded U-clip

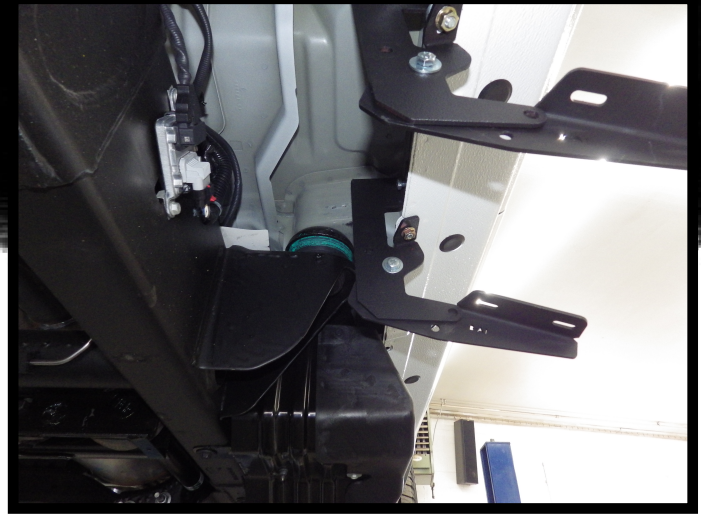
**SEE IMAGE ON THE LEFT FOR  
INSTALLATION OF U-CLIP.**





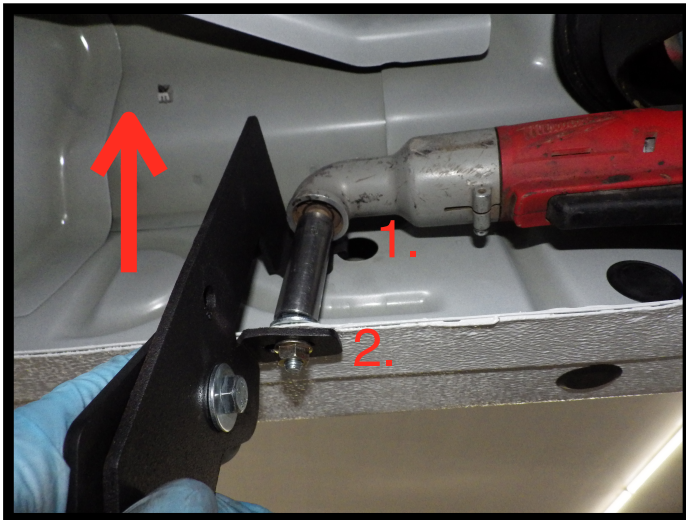
#### 5. INSTALL THE REMAINING CAB BRACKETS.

Complete the installation of the driver side and passenger side brackets. Use the same hardware order as the first two brackets. (bolt-washer-flange nut from the top down)



#### 6. ALLOW THE BOTTOM SECTION OF THE CAB BRACKETS TO "PIVOT".

Leave the bottom section of the brackets loose and with only the hardware that came pre installed. This will allow the bracket to "pivot" after the running board has been placed on the brackets. This method will speed up the install greatly.



#### 7. TIGHTEN THE TOP SECTION OF THE CAB BRACKETS TO THE TRUCK.

Push up on the bracket and ensure the bottom tab is fully contacting the sill of the truck. (2)

Tighten the bolts starting with the upper bolt. (1) and lastly the bottom bolt (2).



#### 8. TIGHTEN THE BOLT SECURING THE DPF BRACKET AT THIS TIME.

Once the brackets are tightened time should be taken to ensure all the brackets are sitting at the same height. This can simply be done by looking down the side of the truck.

**TAKING THE TIME TO ENSURE THE BRACKETS ARE ALL THE SAME HEIGHT WILL GREATLY IMPROVE THE OVERALL QUALITY OF THE INSTALL AND ENSURE THE RUNNING BOARDS ARE NOT DEFORMED BY A POORLY INSTALLED BRACKET.**



**PLEASE NOTE: THIS SET OF REAR BRACKET INSTALLATION INSTRUCTIONS ONLY APPLIES TO 6.6 BOX AND DUALY APPLICATIONS. IF THIS VEHICLE HAS A SINGLE REAR WHEEL AXLE AND A 8.0 BOX PLEASE REFER TO THE NEXT SET OF REAR BRACKET INSTRUCTIONS.**

### TOOLS REQUIRED

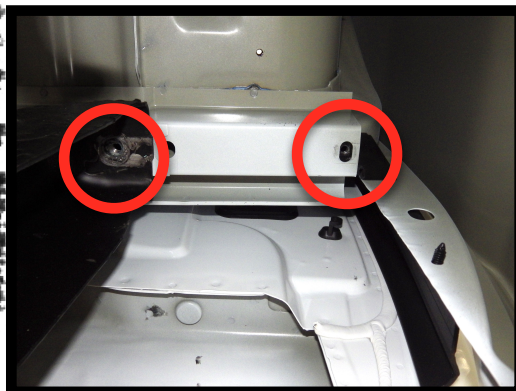
10mm Socket or Combination Wrench

13mm Socket  
13mm Combination Wrench  
13mm Socket  
18mm Socket

### PARTS LIST

QTY	DESCRIPTION
1	Passenger Rear Bracket
1	Driver Rear Bracket
1	Left Base Bracket
1	Right Base Bracket

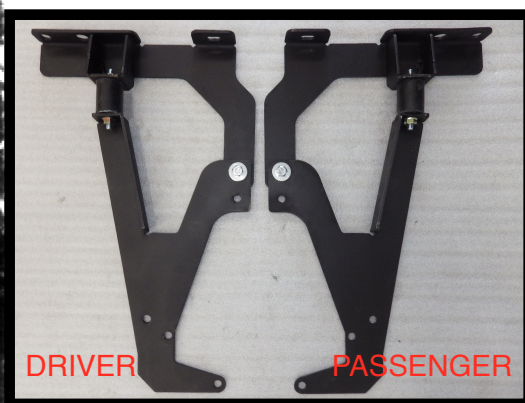
## 6.6 AND DUALY REAR BOX MOUNTED BRACKET INSTALL.



### 1. LOCATE THE FACTORY MOUNTING LOCATIONS.

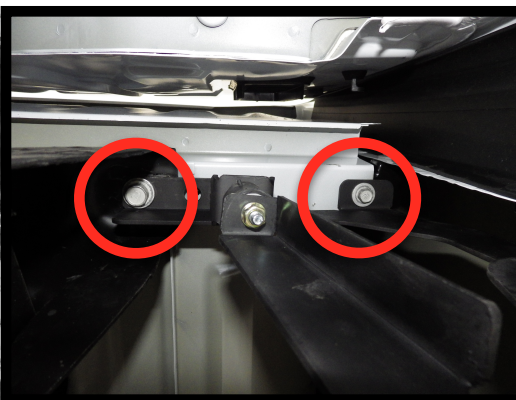
Located on the driver and passenger side there are box mounting locations. Locate the box mounts towards the front of the box (closest to the cab).

Using a 13mm and 18mm socket remover the factory hardware shown in the picture on the left. Keep the hardware as it will be reinstalled.



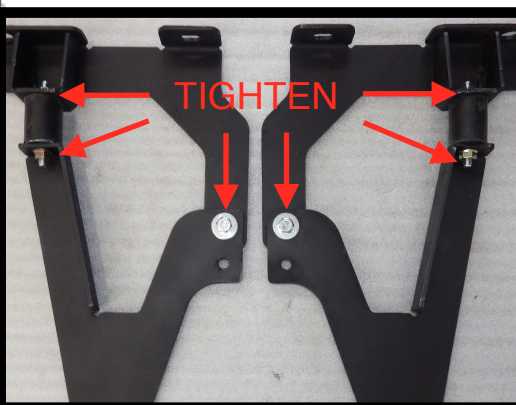
### 2. IDENTIFY DRIVER AND PASSENGER REAR BRACKETS.

Holding the two brackets as shown in the picture on the left identify the driver side and passenger side rear brackets.



### 3. REINSTALL FACTORY HARDWARE.

Holding the bracket in place, reinstall the factory hardware and tighten.



### 4. TIGHTEN UPPER SECTION OF REAR BRACKET.

If not already done tighten the upper section of the rear bracket using a set of 13mm wrenches.

**PLEASE NOTE: THIS SET OF REAR BRACKET INSTALLATION INSTRUCTIONS ONLY APPLIES TO VEHICLES WITH 8.0' BOXES WITH SINGLE REAR WHEELS.**

# 8.0 SINGLE REAR WHEEL REAR BRACKET

## TOOLS REQUIRED

10mm Socket or Combination Wrench

13mm Socket

13mm Combination Wrench

18mm Socket

## PARTS LIST

QTY	DESCRIPTION
1	Passenger Rear Bracket
1	Driver Rear Bracket
1	Left Base Bracket
1	Right Base Bracket

### 1. LOCATE THE FACTORY MOUNTING LOCATIONS.



Located on the driver and passenger side there are box mounting locations. Locate the box mounts towards the rear of the box (closest to the axle).

Using a 18mm socket remove the box mounting bolt. Keep the bolt as it is used to install the rear bracket.

### 2. INSERT THE BLIND FASTENERS.



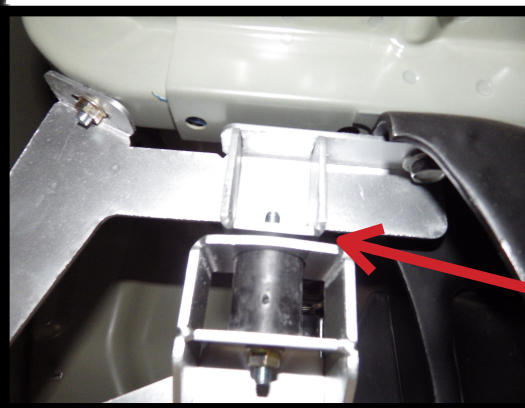
Using the factory opening in the rear crossmember, as shown in the top right picture on the left, insert the supplied M8 blind faster and locate it in the hole towards the outside of the crossmember.

### 3. INSTALL THE REAR BRACKETS.



Using a supplied M8 flange nut and the factory box mount bolt mount and tighten the rear bracket to the vehicle.

### 4. TIGHTEN ALL THE HARDWARE EXCEPT FOR THE BASE BRACKET AT THIS TIME.



Ensure all the hardware on the top of the rear brackets are tight. The only hardware loose at this time should be the base bracket.

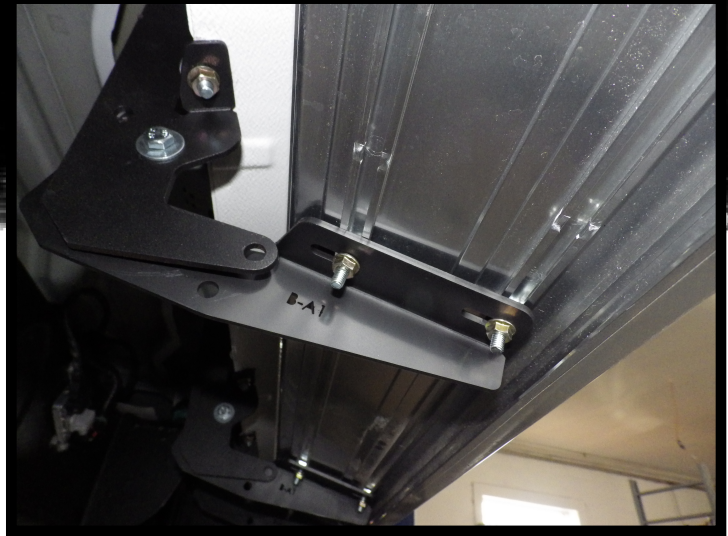
**TIP:** There is supposed to be a gap between the upper section of the bracket and the mid section where the rubber mount is located. This is to allow for box twist while providing a physical stop when weight is applied to the boards.





**9. PLACE THE RUNNING BOARDS ON THE BRACKETS.**

With the brackets tight, align the T bolts (seen in picture above) with the slots in the bracket and let the board rest on the brackets.



**10. THREAD THE SUPPLIED M6 FLANGE NUTS ON THE T BOLTS.**

Using the supplied M6 flange nuts, secure the boards to the brackets. Do not fully tighten the T bolts at this time as the board will likely need to be adjusted.



**11. PUSH UP ON THE BOARDS AND INSERT REMAINING HARDWARE.**

Use assistance if required. Push up on the running boards allowing them to “pivot” into place and install the remaining hardware.

With all the hardware installed in the brackets, tighten the hardware.

The “pivot” action simplifies the installation by aiding in the placement of the running boards on the brackets.



**12. TIGHTEN THE M6 FLANGE NUTS AND CHECK THE ALIGNMENT OF THE REAR BRACKET.**

With all the bracket hardware tight, tighten the M6 flange nut securing the boards to the brackets.

With the hardware tight, ensure the rear bracket is correctly aligned. This can easily be done by looking down the running board. It should be perfectly straight and not “bowing”. If the rear bracket needs adjustment, this can be done by using the slots in the rear bracket. These slots were intended to allow for vertical adjustment.

# WARRANTY

## MAINTENANCE

To ensure your Excalibur Running Boards maintain their factory finish be sure to clean your running boards on a regular basis. For a long lasting finish, simply clean the running boards with hot soapy water and spray a long lasting wax or ceramic coating, then remove with a non abrasive cloth. Avoid using soaps and chemicals with caustic soda, such as engine cleaners, as this may result in discolouration to the finish. Also, avoid using soaps, waxes and polishes with abrasive properties.

## POLISHED SILVER FINISH WARRANTY

Excalibur Running Boards guarantees the original purchaser a 3 year warranty against manufacturer defects in workmanship and plastic materials. The polished silver finish is subject to a limited 1 year warranty against discolouration and corrosion.

This warranty covers the cost of the defective part(s) and not the cost of removal or installation, shipping, or incidental charges.

This warranty is limited to replacement of the product, carries no cash value and is limited to the purchase price.

## SANDEX BLACK AND GLOSS WHITE FINISH WARRANTY

Excalibur Running Boards guarantees the original purchaser a 3 year warranty against manufacturer defects in workmanship and plastic materials. The powder coated finish is subject to a limited 3 year warranty against discolouration and corrosion.

This warranty covers the cost of the defective part(s) and not the cost of removal or installation, shipping, or incidental charges.

This warranty is limited to replacement of the product, carries no cash value and is limited to the purchase price.

## STAINLESS STEEL BRACKET WARRANTY

Excalibur Running Boards guarantees the original purchaser limited lifetime warranty against manufacturer defects in workmanship and materials. This warranty covers the cost of the defective part(s) and not the cost of removal or installation, shipping, or incidental charges. This warranty is limited to replacement of the product, carries no cash value and is limited to the purchase price.

## LED LIGHT WARRANTY

Excalibur Running Boards guarantees the original purchaser limited 1 year warranty against manufacturer defects in workmanship and materials. This warranty covers the cost of the defective part(s) and not the cost of removal or installation, shipping, or incidental charges. This warranty is limited to replacement of the product, carries no cash value and is limited to the purchase price.

All warranty claims will be initiated at the place of purchase. The original purchaser will be required to present the original sales receipt with the purchase date shown and provide photographs of the defect. All warranty replacement requests must be submitted via email to [excaliburrdm@gmail.com](mailto:excaliburrdm@gmail.com).

## *The following terms and conditions apply to this warranty;*

This warranty is only in effect to the original purchaser and shall not apply if the Excalibur Running Boards have been removed from the original vehicle which they were installed on.

The warranty is void from any accident, improper installation, modifications, misuse, abuse or neglect, chemical spills, vandalism, lack of maintenance, road hazards and debris, or any other use not intended for the purpose of running boards.

## DISCLAIMER

Buyer assumes all risk and liability for the installation and use of Excalibur products.

Excalibur Research Development & Manufacturing Ltd assumes no liability for injury, loss, incidental or consequential damages in the event of an accident. Excalibur Running Boards are designed to help protect a vehicles exterior finish but should not be relied upon as protection for the vehicle or its occupants in the event of an accident. Excalibur Running Boards does not guarantee the protection of the exterior surfaces of the vehicle.

Thank you for choosing Excalibur Running Boards.